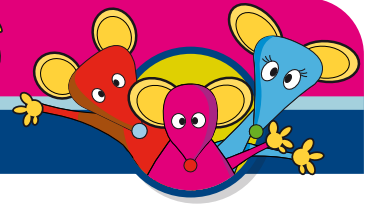


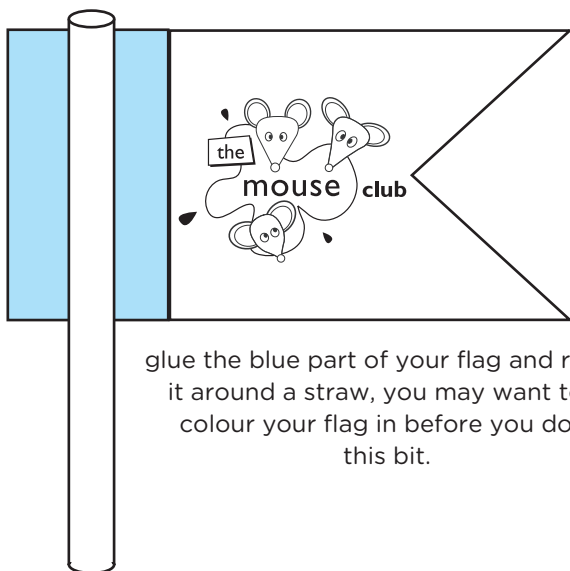
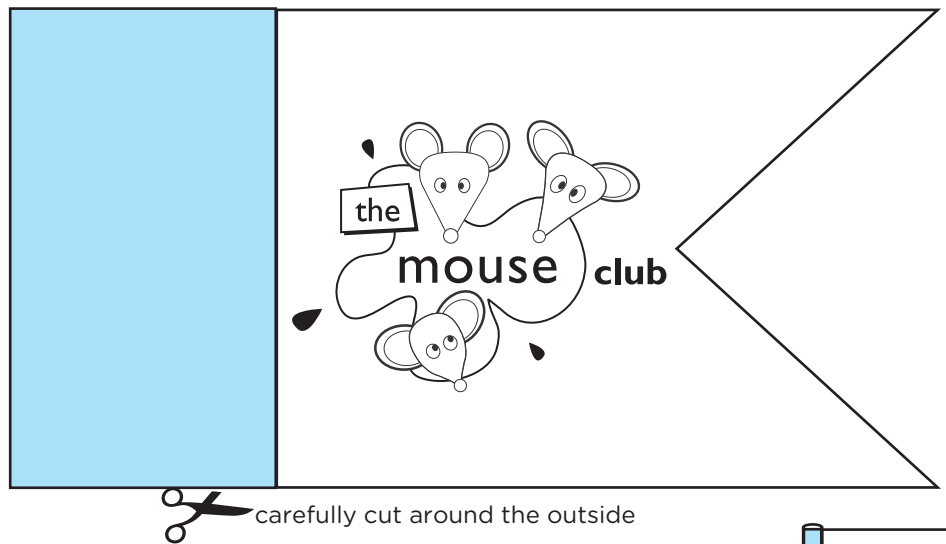
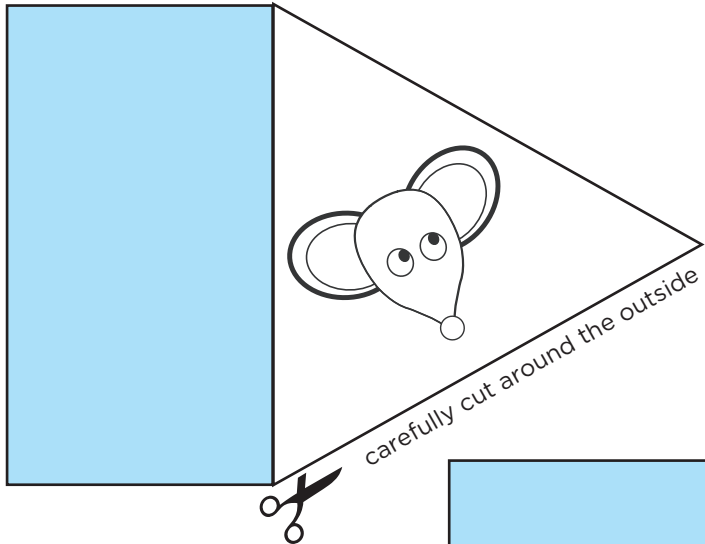
Inspiring young minds...

KIDS

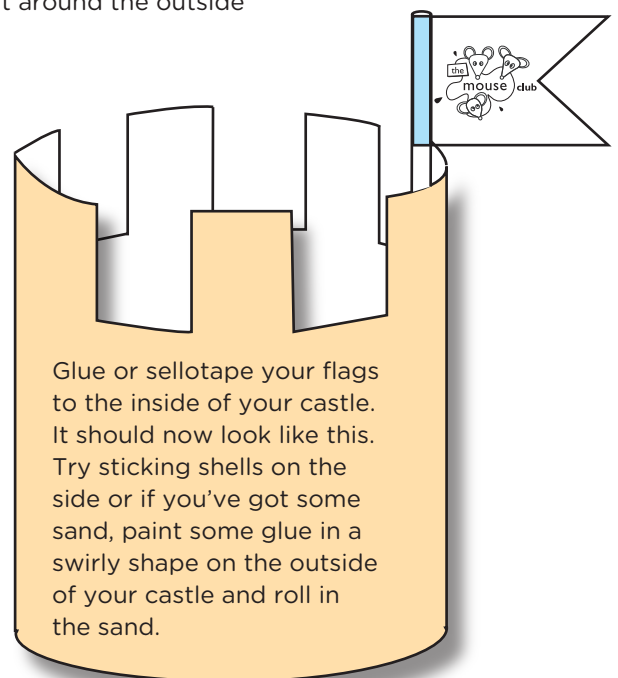


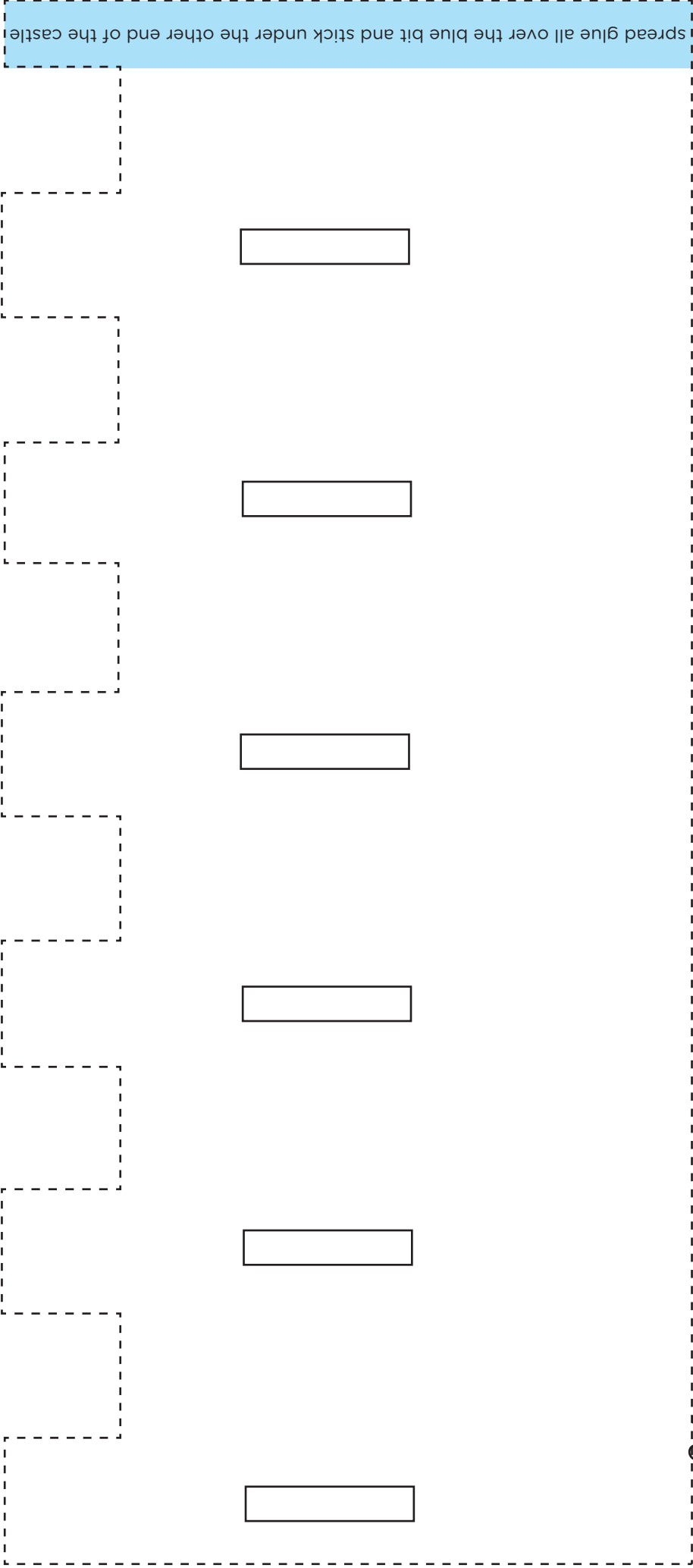
## Indoor Sandcastle

Take the Summer indoors on rainy days and make your own seaside fun!  
First colour your castle in.

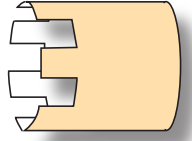


glue the blue part of your flag and roll it around a straw, you may want to colour your flag in before you do this bit.





carefully cut all around the line



YOUR CASTLE SHOULD NOW LOOK LIKE THIS now stick your flags in place